



Lyttelton Museum



Newsletter - Summer 2015

Collections update - Development Committee update - Calendar 2016 - Milk Shed - Christmas Party - Notes from the Curator's Desk - and more...

Development Committee update

Since the last newsletter, the committee's focus has been on sites for a new museum in London Street. Committee representatives attended a meeting at the Christchurch City Council to discuss our interest in the Council's old Service Centre site next to the Library. They met with Councillor Andrew Turner, planner Janine Sowerby and two staff members from the Council's Corporate Support Unit. A way forward was outlined to us if we wished to definitely pursue the old Service Centre site – principally this would involve preparing and presenting to the Council, by mid-February next year, a Business Case for Council's consideration.

However, the Development Committee considers another, privately owned, site in London Street also has considerable potential. To help us evaluate the two sites, an architect, who is very experienced in museum work, is being consulted. At this stage we are not seeking sketch proposals or preliminary designs but rather the architect's ideas on the opportunities and constraints at each site. Once we have heard back from the architect, the Development Committee proposes to present its recommendation to Museum Society members and seek their approval to pursue what we think is the best site for a new museum.

Final call for Museum site ideas

At the 2014 AGM, Society members agreed to a Development Committee that would work on a process for the evaluation of a site for a new museum. As the committee's work has progressed we have asked for Society members' ideas and these have been forthcoming and suggested sites duly considered. Because there is a wealth of potential sites, the process to decide on the ideal one has been rather long, but the Development Committee is closing in on making a recommendation. As the options are narrowed down, if any member has any final thoughts, please let the Development Committee know as soon as possible through the usual contacts - write to PO Box 95, Lyttelton 8841, phone 03 328 8972, or email info@lytteltonmuseum.co.nz.



From the archives: Museum President Captain A. R. Chapman addressing the crowd at the opening of the new Museum on Gladstone Quay, 23 Feb 1980.

Collections update

Brian Walker Bequest: As a result of the dedication and hard work of Museum volunteer Colin Rossie, Brian Walker's extensive (1300!) collection of maritime books bequeathed to the Museum is now catalogued and ready for storage – thank you Colin!

Museum collection technicians April Guenther and Murray McGuigan are making amazing progress – as of the end of October, 4453 have been catalogued and 3491 of them packed for storage.

The space in the Canterbury Cultural Collections Recovery Centre currently housing the Museum's collection is now due to be returned to the Air Force Museum. Early in the new year, Lyttelton Museum's collection will be shifted into a different storage hangar on the Air Force Museum premises and will remain there until 2018. In preparation for this move Murray has been packing smaller collection items into large lined cardboard pallet boxes. Larger items will be stored on individual pallets. Access to the collection in this new space will be considerably more restricted, however April and Murray will continue with the cataloguing in 2016.

The quarterly Museum members' meeting was held at the Recovery Centre on 10 October 2015. Following the meeting Murray gave a presentation about the cataloguing and packaging work he and April are doing, and showed members through the collection storage area.

Don't forget you can view nearly 2000 of the Museum's collection items at <https://ehive.com/account/5362>, and if you know anything about any of the items on there, the Museum would love to hear from you. Keep a look out for another big upload of catalogued collection items in January.



During a visit to the Canterbury Cultural Collections Recovery Centre on 10 October 2015 Lyttelton Museum collection technician Murray McGuigan (right) shows Museum members the large cardboard pallet boxes in which the collection is being packed in preparation for less accessible storage.

Milk Shed update

The smaller items recovered from the Milk Shed are now with the rest of the collection at the Recovery Centre. A number of large items are still stored with the company that recovered them and will join the collection in December. Thanks to Protranz for their assistance with this.



One of the larger items from the Milk Shed awaiting transport to the Canterbury Cultural Collections Recovery Centre.

Another successful Community Garage Sale

On 14th November the Museum again hosted one of Project Lyttelton's highly successful garage sales. Takings on the day were \$480, which will help with Museum expenses. Thanks to Teresa Cameron at the Garage Sale for looking after us and to Lex Calder, Liza Rossie, Ursula Rack, Helen Greenfield and Andrea McHarg for their hard work on the day!

Recent donation

Lyttelton Museum recently received an interesting donation from Malcolm Pearson (former long-serving Museum committee member and recently retired Captain of the steam tug *Lyttelton II*). Malcolm describes how he acquired the object: "About five years or more ago I was skippering the Tug *Lyttelton II* on a charter and at anchor in Little Port Cooper on the eastern side. The wind blew up from the southwest and as it was about time to return to Lyttelton, we hove up the anchor only to find the cable draped over the flukes. As we were on a lee shore I got

the leading hand to cut it clear with a hacksaw before we drifted on to the rocks. We got back okay and the next morning I rang the harbour master, Captain Bill Oliver, to inform him what had happened. His reply was "Did you? We have been looking for that cable for years". If I had had time, I would have cut it in two places, thus saving a piece. However, about three months ago during a members' trip, anchoring about the same place, we again picked up the cable on the flukes, but this time we steamed home slowly with it still draped over the anchor and managed to get it off after berthing. "



Malcolm Pearson with a portion of Lyttelton Harbour's first telephone service cable.

This rusty and barnacled object is most likely a section of the telegraph cable which connected Adderley and Godley Heads with Lyttelton. In 1878 the Harbour Board found its telegraph unreliable and investigated a telephone service. They acquired the cable second-hand (it previously spanned Cook Straight as a telegraph cable) and it was laid between the Harbour Heads on 29 November 1879. This became the first submarine telephone service in New Zealand when communications were established on 31 December 1879.

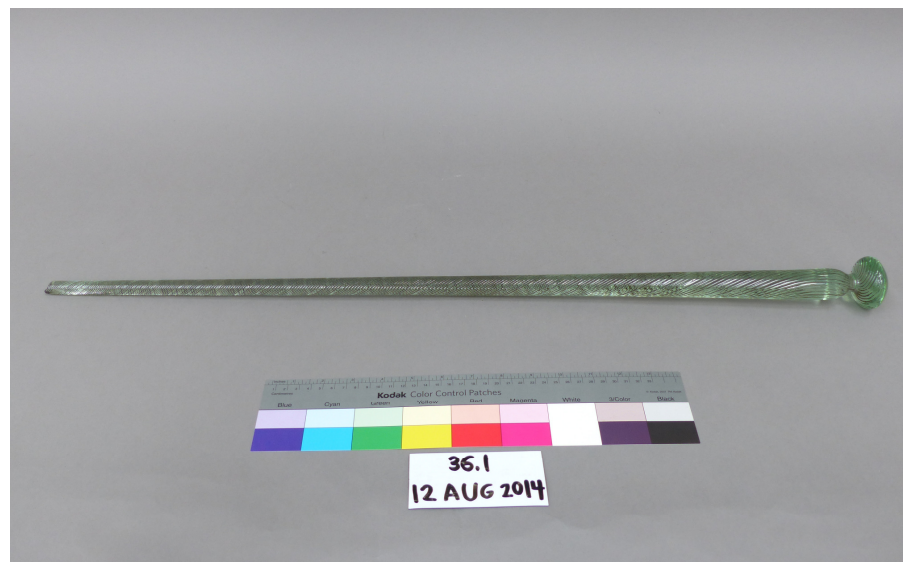
Notes from the Curator's desk

Need a little help in the walking department? What about a glass walking stick? This little find is definitely one that evokes an 'F' word. 'Frigger' that is. That's what the English called a glass walking stick in the late 19th and early 20th centuries. Those from the United States and Europe preferred the more evocative term 'glass whimsy'.

Around that time, glassmakers often ended their working day by creating whimsical items from leftover materials.

It was a time to show off and let the creative juices run wild. Given their fragile nature, glass canes were rarely used in the conventional sense, although some were employed ceremonially in parades. It is extremely difficult to link 'glasshouse whimsies' back to their original makers as they were not part of the usual day-to-day production of a glasshouse. Consequently we know very little about our wee beauty, other than it was donated to the Lyttelton Museum by Captain Andrew Brodie.

https://ehive.com/account/5362/object/470004/Walking_stick



Lyttelton Museum Calendar 2016

Christmas present dilemmas are solved! The calendar is back and available now for only \$15.00 (cash only please) from these Lyttelton establishments:

Coastal Living, 32 London Street
Henry Trading, 33 London Street
God Save the Queen, 33 London Street
Leslie's Book Shop, 18 Oxford Street
London Street Books & Antiques, 48 London Street
Lyttelton Harbour Information Centre, 20 Oxford Street
Lyttelton Library, 37 London Street



Lyttelton Times packaging workshop

This workshop followed the members' meeting at the Recovery Centre on 10 October 2015. Under the guidance of Lyttelton Museum collection technician Murray McGuigan, members learned about best practice wrapping and labelling of collection objects, and completed the packaging of a significant portion of the Museum's numerous newspaper volumes in preparation for long-term storage.



Museum members Lex Calder and Sue Stubenvoll carefully wrap bound volumes of the *Lyttelton Times* in Tyvek.

Lyttelton Museum Christmas Party 2015

It's that time of year already! Please join us for the annual Christmas get-together and a celebration of the Museum's achievements in 2015.

Lyttelton Club, 23 Dublin Street, 7pm Friday 11 December 2015.

Please RSVP by 4 December to info@lytteltonmuseum.co.nz or 03 328 8972.

Lyttelton Museum calendars will be available on the night.



Lyttelton Museum

Please note that the Museum is not currently open. We welcome your enquiries while we work towards establishing a new Museum.

PO Box 95, Lyttelton 8841

+64 3 328 8972

info@lytteltonmuseum.co.nz