



# Lyttelton Museum



## NEWSLETTER - Spring 2020



## HARBOUR PLACES

We are pleased to present above a new artist's impression of the proposed Lyttelton Museum. The impression was prepared, and gifted to the Society, by Warren and Mahoney. Architect Fiona Short states:

*"This updated image shows the design progression including cultural design conversations."*

We are very grateful to receive this gift from Warren and Mahoney.

### MEMBERSHIP MATTERS - AGM 2020

The AGM was held on Sunday 25 July at the very hospitable Lyttelton Fire Brigade premises. Thank you to all those that attended. We would also like to give a huge thank you to Winsome Dormer for her very entertaining talk on her 'Local Eyes' exhibition.

Kerry McCarthy was re-elected as our President; Lizzie Meek, Vice President; Secretary is Ursula Rack and Treasurer is Helen Cobb. Other committee members re-elected were Ann Jolliffe, Wendy McKay, Peter Rough, Murray McGuigan. Nathan Pohio continues as our Ngati Wheke representative, and Reuben Davidson as the Local Community Board representative. Also on the team are our contractors Bec McMaster (Project Support) and Gill Hay (Fundraising Chair). We have also recently welcomed Peter McCarthy, Rosemary McNoe, Neville Petrie (Development Committee) and Jillian Frater (Volunteer Coordinator) as co-opted members of our Team.

# HARBOUR PEOPLE



Peter McCarthy

## WELCOMING PETER MCCARTHY TO THE COMMITTEE

We were delighted to be able to co-opt Peter McCarthy onto the committee at this year's AGM on 25 July. With his knowledge and experience of Antarctica, Peter will take a close look at our Antarctic-related collection, adding a deeper understanding of these objects that are so important to Lyttelton Museum.

### Antarctica in his DNA

Links with Antarctica are a special part of the McCarthy family history. Peter's grandfather, Mortimer McCarthy, joined Scott's *Terra Nova* expedition in 1910; his great uncle, Timothy McCarthy, was on Shackleton's 1914–17 Imperial Trans-Antarctic Expedition.

"My grandfather died when I was 7 but I do remember him. He was such a character. He had a strong Irish brogue and he could certainly tell a good story – Baden once said to me that Mortimer was good at 'drawing the long bow'. Mortimer was an Able-bodied Seaman and sailed on all three voyages to Cape Evans, as well as on her return journey to Cardiff in Wales." Scott's expedition ended tragically, of course, but "my grandfather wouldn't hear a bad word against him."

Great Uncle Timothy was also well-regarded in sailing circles, and there was always a lot of talk about Antarctica in the family. Peter shared the family's interest but it wasn't part of his first career plans. From his Primary School days his heart was set on a career in the Police Force. "I was with the Police for 25 years and it was really satisfying." Looking at potential alternatives, however, Peter decided to take leave from the Police and do the Graduate Certificate in Antarctic Studies at the University of Canterbury in 2007/8. He had found his new direction.

The course included two weeks down on the Ice. "It was quite something looking down over the area that I knew the *Terra Nova* would have been. It was very special landing there for the first time." The highlight of that first visit was going to Cape Evans and seeing Scott's hut there, which Peter's grandfather had helped to build. "It was very emotional for me. My Dad had never made it down to Antarctica, which he would have loved to have done. I felt an extraordinary connection to my grandfather."



Photographic print of 'Terra Nova' crew members standing in front of the bow of the ship whilst in Antarctica. Mortimer McCarthy third from the left. Photograph taken by Edward A. McKenzie, Leading Stoker, R.N. Lyttelton Museum ref. 418.11

After completing the graduate course, Peter was determined to work in Antarctica. He left the Police Force and from the summer of 2010/11 went on to spend six summer seasons on the Ice working for Antarctica New Zealand as a Programme Support Supervisor.

"It was a great job. We would be providing logistical support for up to 120 scientists a year. It was very busy with long days, working out of Scott Base. I have such admiration for the commitment of the scientists. Many of them would be there for only two or three weeks and they were totally focussed."

Now we must bring Baden Norris back into the story. Lyttelton Museum's founder and an Antarctic historian, Baden's interest in the Ice had been inspired by Peter's grandfather, Mortimer, with whom he worked on the Inter-Island ferries. Years later, Baden gave lectures to students on the Graduate Studies course. Peter already knew Baden but they went on to form a real friendship. Many of the objects in our collection that Peter will be looking at were acquired by Baden and came from those early expeditions to Antarctica.

Peter has also followed in the footsteps of his grandfather joining Heritage Expeditions sailing to Antarctica. "These are a four week voyage from Bluff during which passengers can immerse themselves into Antarctica attending lectures, seeing bird and marine life while at sea, and landing at many historical sites along the way. It's a very special experience. And I would share my family's stories with the passengers."

Look out for Peter during the 'Days of Ice' festival being organised by ChristchurchNZ, which promotes the city as The Gateway to Antarctica. The festival runs 8–18 October and will celebrate links with the Ice. Peter is co-ordinating the Antarctic Society's Christchurch City Antarctic walk at 2pm on Sunday 11 October; and the Lyttelton Antarctic Walk at 1pm on Saturday 17 October.



# HARBOUR STORIES

# HARBOUR HERITAGE

## LYTTELTON ANTARCTIC HERITAGE WALK

## LATEST LOCALEYES EXHIBITION



**When:** Sat 17 Oct 2020, 1:00pm–3:30pm  
**Where:** Albion Square, 44 London St, Lyttelton  
**All ages welcome. Admission: Free.**

The 3.5 km guided walk starts at Albion Square, highlights the site of the new Lyttelton Museum, then down to the No 2 wharf and takes in Tug Lyttelton, contemporary Antarctic shipping and the iconic Dry Dock. Lyttelton Museum is proud to be associated with the Christchurch NZ 'Days of Ice' Festival. Christchurch is one of the five Antarctic Gateway Cities in the world (the others being Hobart, Ushuaia, Punta Arenas and Cape Town), and every year around the beginning of October, celebrates the beginning of the Austral summer and main research season in Antarctica. 'Days of Ice' is this year's festival, made up of a diverse range of Antarctic themed events and activities. We're delighted that team member Peter McCarthy will be leading one of his fantastic historic walks in association with the Museum, the Antarctic Society, and Youthtown. A fascinating way to spend a couple of hours exploring Lyttelton's unique Antarctic History and connections with the Heroic age of exploration – Scott and Shackleton - right through to today, where we see the Italian icebreaker the *Laura Bassi*, currently moored up in port.



**When:**  
**8 October- 1 December**  
(including the Days of Ice)

**Where:**  
**Lyttelton Museum**  
**Cabin 33 London Street**  
**Lyttelton**

**+ online**  
**[www.lytteltonmuseum.co.nz/localeyes](http://www.lytteltonmuseum.co.nz/localeyes)**

Another 'Days of Ice' event, the latest Lyttelton Museum LocalEyes exhibition, which showcases Antarctica.

Guest curator for the Lyttelton Museum LocalEyes Antarctic Special is renowned Antarctic scientist and Whakaraupō local Dr Margaret Bradshaw. Known in particular for being the first woman to lead an Antarctic deep field party in 1979, she was awarded the Queen's Polar Medal in 1993. Dr Bradshaw's many seasons on ice have focused on fossils and trackways of early life in the Devonian period, linking her finds to similar age rocks in New Zealand, Australia and South Africa.

The photos selected by Margaret will be viewable on our website [www.lytteltonmuseum.co.nz/localeyes](http://www.lytteltonmuseum.co.nz/localeyes) and also on 24/7 display at the Museum's cabin on London Street.

*Image credit: The US Icebreaker Edisto followed by H.M.N.Z.S. Endeavour in McMurdo Sound, Antarctica. Official U.S. Navy Photograph. By Photographer's Mate Second Class (Ph2) R.H. Lane, USN. 1963. Lyttelton Museum ref. 11829.1*

## LOCALEYES EXHIBITION SERIES

**GUEST CURATOR:**  
**DR MARGARET BRADSHAW**

**MUSEUM CABIN**  
33 LONDON STREET, LYTTELTON  
**+ ONLINE**

**OPENING: 8 OCTOBER**



*Dr Margaret Bradshaw*

# MEET THE COMMITTEE

## Ann Jolliffe Committee Member

### Why did you get involved with the committee?

I became involved in the committee, continuing my long term interest in Lyttelton's and the surrounding harbour's history and the communities in it, after making Lyttelton my home 40 Years ago. I was first the community boards representative and then once retired from the community board I was appointed as a committee member.



**What's your background and skills?** My skills are based on lifetime experiences, starting in the UK, a meteorologist, a mother, a teacher, elected councillor/ community board member and a discreet, keen listener.

### The best exhibition you've seen and where?

The most memorable collection I have seen was in 1973 at the British Museum, "The treasures of Tutankhamun."



*Diorama of Lyttelton Harbour, scale model. Maker: Cyrus J.R. Williams, MInstCE, Engineer to the Lyttelton Harbour Board? Lyttelton Museum ref. 85.1*

### Your favourite object from the Lyttelton Museum collection and why?

Hard to choose...but they are the diorama model of Lyttelton that used to sit downstairs at the old Museum and the Diver in traditional hardsuit & helmet, this was also in the old museum on the staircase and it reminds me of a relation of mine who was a diver for the British Navy and wore the very same suit.



*A Lyttelton Harbour Board diver in a Siebe Gorman diving suit similar to one in our collection, ca. 1950. Lyttelton Museum ref. 9783.1*

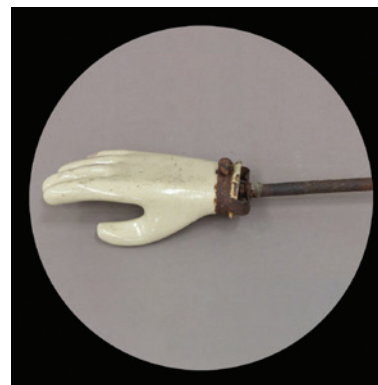
# HARBOUR PEOPLE



## VOLUNTEERS TO STAFF THE LITTLE MUSEUM

We are on the look-out for some more keen volunteers to staff the cabin particularly when we have exhibitions on, to answer queries and talk to visitors about historical Lyttelton and the exciting plans for the Museum. We'd like to open the cabin each Saturday during market hours. We are asking volunteers to meet and greet anyone who wanders down to the site, to hand out our literature, encourage people to also visit Grubb Cottage on London Street, and generally be a contact for anyone with information or questions about the community's history.

If this sounds like something you would be interested in being involved with, please contact Jillian at [info@lytteltonmuseum.co.nz](mailto:info@lytteltonmuseum.co.nz).



Even if you can only spare an hour or two here or there, we are keen to hear from you.

Coffee voucher provided.

*Object credit: Display hand - ceramic display hand with metal support. Lyttelton Museum ref. 3028.1*

## CONNECT WITH US

**WEB:** [www.lytteltonmuseum.co.nz](http://www.lytteltonmuseum.co.nz)

**COLLECTION ONLINE:** [bit.ly/LytteltonMuseumOnline](http://bit.ly/LytteltonMuseumOnline)

**EMAIL:** [info@lytteltonmuseum.co.nz](mailto:info@lytteltonmuseum.co.nz)

**POST:** PO Box 95, Lyttelton 8841

**PHONE:** +64 3 328 8972 to leave a message

**FACEBOOK:** [www.facebook.com/lytteltonmuseum](http://www.facebook.com/lytteltonmuseum)

**INSTAGRAM:** @lytteltonmuseum