

Te Ūaka  
The Lyttelton  
Museum

## WINTER Newsletter 2021



### Update from Peter Rough, Chair, Development Subcommittee

View of the proposed Museum from the south-eastern corner of Albion Square. Image prepared by Warren & Mahoney.

This image was included in a Request for Further Information document, submitted to Council in May as part of our application for resource consent. Davis Ogilvie, our consultant planners, lodged a consent application in August 2020. Since then, our consultants have provided additional information as requested by Council, including a comprehensive suite of shadow diagrams and an urban design report. Like many resource consent processes, ours is proving a drawn-out one, but we are hopeful that we will receive the Council's s95 Notification Report soon. The response to the proposal by neighbours, or 'affected parties', will determine whether the Council will hold a hearing for consent. We are optimistic that we will gain consent, but we need to remain patient!



**Our AGM will be held at 2 pm, Saturday 24th July** at Trinity Hall, Lyttelton Recreation Centre, 25 Winchester Street, Lyttelton.

Our speaker will be Committee member Peter McCarthy - "Whakaraupō Lyttelton Harbour - Antarctic Port". Peter's extensive knowledge and experience of Antarctica includes special family links – his grandfather, Mortimer McCarthy, joined Scott's expedition in 1910 and his great uncle Timothy was on Shackleton's 1914 - 17 expedition.

**There are a few spaces available on our Committee and nominations can be made to [ursula.rack@teuaka.org.nz](mailto:ursula.rack@teuaka.org.nz).**

**To share your ideas, get in touch at [info@teuaka.org.nz](mailto:info@teuaka.org.nz) or come to our AGM.**

Black and white photographic print of 'Terra Nova' crew members standing in front of the bow of the ship whilst in Antarctica. Mortimer McCarthy third from the left (cropped). Photograph taken by Edward A. McKenzie, Leader Stoker, R.N. Te Ūaka The Lyttelton Museum ref 418.11

## Museum Object of the Week

We have recently re-instigated weekly Facebook and website posts highlighting items from the Museum collection. The entire collection was photographed and catalogued after it was rescued from the earthquake-damaged old Museum. Through the posts you can stay connected with the collection while it is in safe storage at Wigram.

We also use these channels to advertise events, such as the recent presentation by Pete Rough at the Top Club on 18 June, about the process behind the proposed building's design, fundraising efforts and collection management.

Keep up to date on our social media or website (links on back page).



Settee, ex 'May Queen', wrecked Camp Bay 1888. One time possessed by Captain Albert Anderson and later given to Baden Norris Sr. Te Ūaka Lyttelton Museum ref 42.1



Maree outside her shop, right next door to the proposed new Museum

## LOCAL EYES

### LocalEyes - Maree Henry

We invited Maree Henry from Henry Trading on London Street to choose six images from Te Ūaka's online collection. Our collection includes 20,000 objects, photographs and archival resources donated by the people of Lyttelton, the wider Harbour community, and beyond. Maree's response illustrates the different ways in which people can engage with the Collection - we all bring our own interests and backgrounds to history and Maree's is a unique perspective.

*"Te Ūaka's website is a fascinating place to visit while we wait for the new museum to open. There is an incredible collection of objects and photographs to peruse. The aesthetic qualities of the images I have chosen appealed to me. In these times of digital imagery and phone cameras, it is nice to remember the box brownie snaps and the moments captured by unassuming photographers decades ago."*



**Visit the latest online LocalEyes Exhibition:**  
[www.teuaka.org.nz/exhibitions/localeyes-maree-henry](http://www.teuaka.org.nz/exhibitions/localeyes-maree-henry)

You can easily search the collection online yourself for areas of personal interest: [www.teuaka.org.nz/online-collection](http://www.teuaka.org.nz/online-collection)



Watersiders, truck being loaded by crane, 1950-2000. Te Ūaka Lyttelton Museum ref 9089.1

View of cliff-face in the Chatham Islands, 1900-1950 (cropped). Te Ūaka Lyttelton Museum ref 14992.125



## Riotous Quiz Night

Lyttelton Arts Factory and Te Ūaka The Lyttelton Museum hosted a riotous quiz night on Saturday 22nd May, with well-loved local Joe Bennett the star of the show as quizmaster. With a full house and an eclectic audience, Joe's left-field approach to general knowledge had the teams in stitches vying for the top spot. Five rounds, including a challenging series of international museum questions saw the leaderboard change throughout the night, with a team of Lyttelton locals, ex-Volcano Café owners Lois Ogilvy, Pete Evans and friends taking out the winning prize.



## Fundraising Campaign Update: Cloak of Tiles Campaign

The quiz night kicked off the Museum's Cloak of Tiles Campaign. The local community is being encouraged to support this wonderful building project by contributing one of the tiles that will cloak the exterior.

Peter Rough, Vice President of the Lyttelton Historical Museum Society invites Cantabrians to get behind this campaign to be part of the new history of the Museum.

*"We have a bold vision for our Museum and we want this new building to become part of the fabric of Lyttelton. Purchasing a tile means securing the taonga and stories of Lyttelton and the Harbour for future generations, in addition to seeing your name on our donor's wall in the new Museum."*

Tiles to clad the outside of the museum can be purchased for a one-off donation of \$1,500, or paid by instalments over three years, with all donations eligible for a 33% tax deduction.

**For information on how to donate please visit**  
**[www.teuaka.org.nz/donate](http://www.teuaka.org.nz/donate)**

It is fitting that Rob and Cheryl de Thier, owners of Lyttelton Supervalu, were the first to purchase a tile with Rob saying:

*"I totally support the new museum project and love the design of the building".*

If you are in Lyttelton, you can see the progress of the Tile Campaign on a large poster outside Supervalu on London Street.



## Introducing Rosemary McNoe

Rosemary joined the Museum as our Fundraising Project Coordinator in March. With a business development background, she has spent the past year in the not-for-profit sector in fundraising and communications. After studying Classics and Art History at university, the thrill of different cultures and heritage lured her to Europe. On her return to New Zealand, she specialised in polar expeditions in the travel industry. She is passionate about Antarctica and Lyttelton's connection to early polar explorations.

Rosemary works with Gill Hay, Chair of the Fundraising Taskforce. You may spot them around Lyttelton as they make connections with local businesses.





## Meet the Committee - Neville Petrie

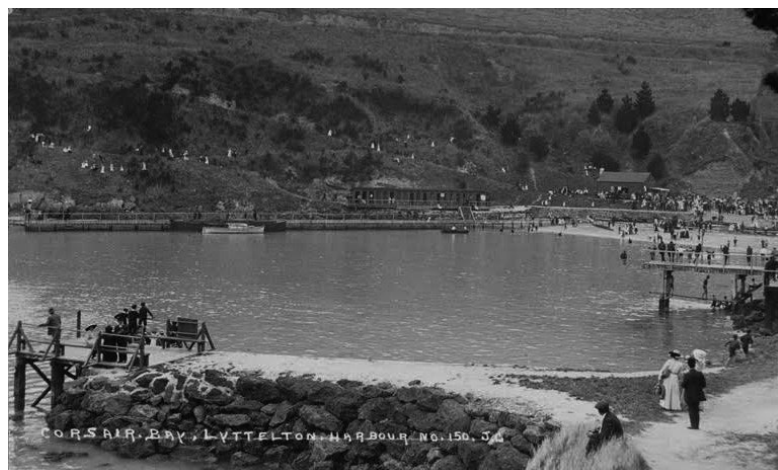
### 1 – Why did you get involved on the Committee?

I have experience in designing and building exhibits for science centres nationally and internationally. When I saw the Museum was interested in volunteers, I felt my experience could be useful in the move towards a new building. I am keen to see a hands-on interactive experience for visitors.

### 2 – What's your background and skills?

Originally a teacher with a keen interest in science, I then developed education resources for the Nature Discovery shops, then I was Public Operations Manager for Science Alive. After three years as Director of the Oil and Gas Discovery Centre in Brunei, I was then CEO of Science Alive for ten years. More recently I have provided consultation to a science

centre in Pakistan, am working to establish one in Samoa, and have developed a 3D electron microscope photographic exhibition - "The Importance of Small". I am currently General Manager of House of Science.



Bathers at Corsair Bay, pre-1900. Te Ūaka Lyttelton Museum ref 14625.125

### 3 – The best exhibition you've seen and where?

I have chosen three favourite exhibitions – "Body World" at the Telus World of Science in Vancouver, "The Science of Sport" in Melbourne, and "Earth's Fury" at Science Alive.

### 4 – Your favourite object from the Lyttelton Museum collection and why?

I live in Corsair Bay and have really enjoyed seeing the many images in the Museum's collection. This one shows the shark fence pool to protect swimmers, and the beach going fashion of the time!

## New Museum Administration Support Staff

In April we welcomed two part-time Administration Support staff to our team. Dr Malcolm Riddoch has an academic background in archaeology and philosophy and twenty five years experience in the commercial and university creative industries sectors. Sarah Lamont obtained a degree in English, then worked in tertiary administration primarily with new migrants and refugees, followed by several years pre-earthquakes at the Timeball Station with Heritage New Zealand. Both Lyttelton residents with a keen interest in history, they will be staffing the Cabin at the Museum site at 35 London Street several mornings a week. Feel welcome to drop in and say hello!



[www.teuaka.org.nz](http://www.teuaka.org.nz)



[www.facebook.com/TeUakaTheLytteltonMuseum/](https://www.facebook.com/TeUakaTheLytteltonMuseum/)



[www.instagram.com/teuakathelytteltonmuseum/](https://www.instagram.com/teuakathelytteltonmuseum/)



[www.linkedin.com/company/teuakathelytteltonmuseum](https://www.linkedin.com/company/teuakathelytteltonmuseum)



[www.teuaka.org.nz/online-collection](http://www.teuaka.org.nz/online-collection)



[info@teuaka.org.nz](mailto:info@teuaka.org.nz)



+64 3 328 8972



33-35 London Street, Lyttelton



PO Box 95, Lyttelton 8841



[www.teuaka.org.nz/donate](http://www.teuaka.org.nz/donate)